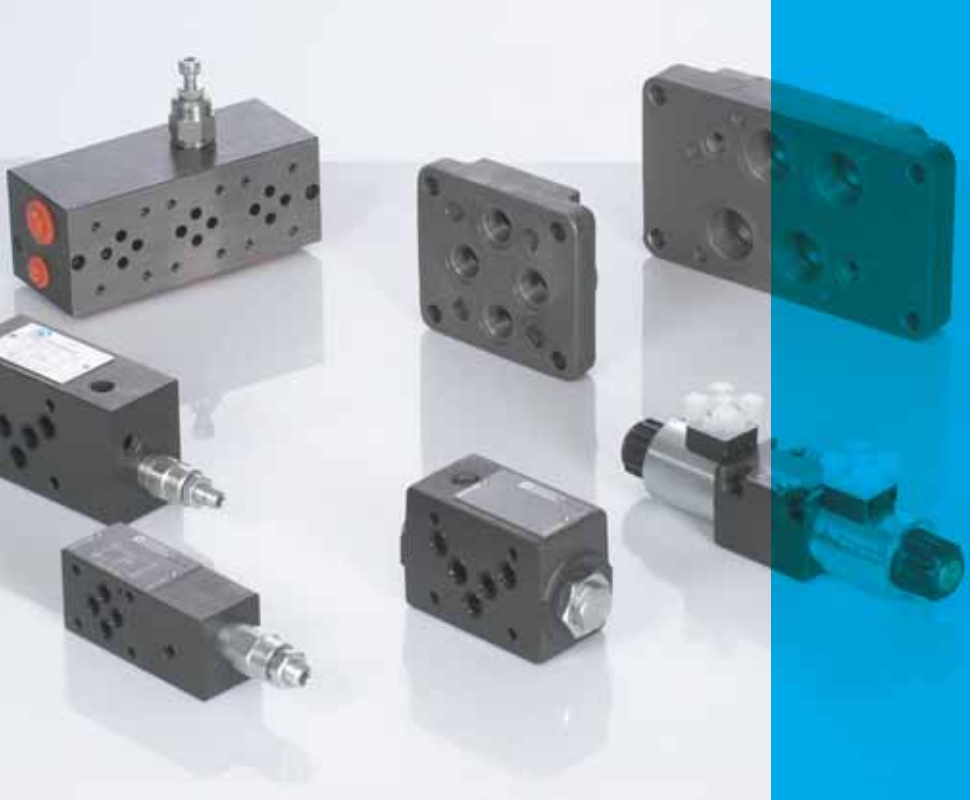


Electroválvulas y placas base

Directional valves and subplates

Électro-distributeurs et Embases



6

Electroválvulas NG6 - Cetop 3

Directional valves for NG6 - Cetop 3
Electro-distributeurs NG6 - Cetop 3

108

Electroválvulas NG10 - Cetop 5

Directional valves for NG10 - Cetop 5
Electro-distributeurs NG10 - Cetop 5

117

Conectores eléctricos

Electric connectors
Connecteurs électriques

125

Electroválvulas NG6 - Cetop 3

Directional valves for NG6 - Cetop 3
Electro-distributeurs NG6 - Cetop 3

Tanks, bellhousings, couplings and filters

Pumps/gear flow dividers/multigear...

Electrical motors

Hydraulic valves

Hydraulic directional control valves

Directional valves and subplates

Joysticks and directional valves

Vacuum and heating interchangers

Hydraulic cylinders

Electro. NG6 - corredera S1

Directional valve NG6 - spool S1
Electro. NG6 - tiroir S1



ARTÍCULO PART N°	TAMAÑO SIZE	VOLTAJE (V) VOLTAGE (V)	CAUDAL MÁX. MAX. FLOW (l/min)	PRESIÓN MÁX. (bar) MAX. PRESSURE (bar)	€
DS3-S1/10N-A110-50K1	NG-6	110 VAC	60	350	218,72
DS3-S1/10N-A230-50K1	NG-6	230 VAC	60	350	218,72
DS3-S1/10N-A24-50K1	NG-6	24 VAC	60	350	218,72
DS3-S1/10N-A48-50K1	NG-6	48 VAC	60	350	243,84
DS3-S1/10N-D12K1	NG-6	12 VDC	60	350	218,72
DS3-S1/10N-D24K1	NG-6	24 VDC	60	350	218,72
DS3-S1/10N-D48K1	NG-6	48 VDC	60	350	243,84

Electro. NG6 - corredera S2

Directional valve NG6 - spool S2
Electro. NG6 - tiroir S2



ARTÍCULO PART N°	TAMAÑO SIZE	VOLTAJE (V) VOLTAGE (V)	CAUDAL MÁX. MAX. FLOW (l/min)	PRESIÓN MÁX. (bar) MAX. PRESSURE (bar)	€
DS3-S2/10N-A110-50K1	NG-6	110 VAC	60	350	218,72
DS3-S2/10N-A230-50K1	NG-6	230 VAC	60	350	218,72
DS3-S2/10N-A24-50K1	NG-6	24 VAC	60	350	218,72
DS3-S2/10N-A48-50K1	NG-6	48 VAC	60	350	243,84
DS3-S2/10N-D12K1	NG-6	12 VDC	60	350	218,72
DS3-S2/10N-D24K1	NG-6	24 VDC	60	350	218,72
DS3-S2/10N-D48K1	NG-6	48 VDC	60	350	243,84

Electro. NG6 - corredera S3

Directional valve NG6 - spool S3
Electro. NG6 - tiroir S3



ARTÍCULO PART N°	TAMAÑO SIZE	VOLTAJE (V) VOLTAGE (V)	CAUDAL MÁX. MAX. FLOW (l/min)	PRESIÓN MÁX. (bar) MAX. PRESSURE (bar)	€
DS3-S3/10N-A110-50K1	NG-6	110 VAC	60	350	218,72
DS3-S3/10N-A230-50K1	NG-6	230 VAC	60	350	218,72
DS3-S3/10N-A24-50K1	NG-6	24 VAC	60	350	218,72
DS3-S3/10N-A48-50K1	NG-6	48 VAC	60	350	243,84
DS3-S3/10N-D12K1	NG-6	12 VDC	60	350	218,72
DS3-S3/10N-D24K1	NG-6	24 VDC	60	350	218,72
DS3-S3/10N-D48K1	NG-6	48 VDC	60	350	243,84

Electro. NG6 - corredera S4

Directional valve NG6 - spool S4
Electro. NG6 - tiroir S4



ARTÍCULO PART N°	TAMAÑO SIZE	VOLTAJE (V) VOLTAGE (V)	CAUDAL MÁX. MAX. FLOW (l/min)	PRESIÓN MÁX. (bar) MAX. PRESSURE (bar)	€
DS3-S4/10N-A110-50K1	NG-6	110 VAC	40	350	243,84
DS3-S4/10N-A230-50K1	NG-6	230 VAC	40	350	243,84
DS3-S4/10N-A24-50K1	NG-6	24 VAC	40	350	243,84
DS3-S4/10N-A48-50K1	NG-6	48 VAC	40	350	268,96
DS3-S4/10N-D12K1	NG-6	12 VDC	40	350	243,84
DS3-S4/10N-D24K1	NG-6	24 VDC	40	350	243,84
DS3-S4/10N-D48K1	NG-6	48 VDC	40	350	268,96

Electroválvulas NG6 - Cetop 3

Directional valves for NG6 - Cetop 3
Electro-distributeurs NG6 - Cetop 3

Electro. NG6 - corredera S8

Directional valve NG6 - spool S8
Electro. NG6 - tiroir S8



ARTÍCULO PART N°	TAMAÑO SIZE	VOLTAJE (V) VOLTAGE (V)	CAUDAL MÁX. MAX. FLOW (l/min)	PRESIÓN MÁX. (bar) MAX. PRESSURE (bar)	€
DS3-S8/10N-A110-50K1	NG-6	110 VAC	50	350	243,84
DS3-S8/10N-A230-50K1	NG-6	230 VAC	50	350	243,84
DS3-S8/10N-A24-50K1	NG-6	24 VAC	50	350	243,84
DS3-S8/10N-A48-50K1	NG-6	48 VAC	50	350	268,96
DS3-S8/10N-D12K1	NG-6	12 VDC	50	350	243,84
DS3-S8/10N-D24K1	NG-6	24 VDC	50	350	243,84
DS3-S8/10N-D48K1	NG-6	48 VDC	50	350	268,96

Electro. NG6 - corredera TA

Directional valve NG6 - spool TA
Electro. NG6 - tiroir TA



ARTÍCULO PART N°	TAMAÑO SIZE	VOLTAJE (V) VOLTAGE (V)	CAUDAL MÁX. MAX. FLOW (l/min)	PRESIÓN MÁX. (bar) MAX. PRESSURE (bar)	€
DS3-TA/10N-A110-50K1	NG-6	110 VAC	60	350	156,98
DS3-TA/10N-A230-50K1	NG-6	230 VAC	60	350	156,98
DS3-TA/10N-A24-50K1	NG-6	24 VAC	60	350	156,98
DS3-TA/10N-A48-50K1	NG-6	48 VAC	60	350	169,54
DS3-TA/10N-D12K1	NG-6	12 VDC	60	350	156,98
DS3-TA/10N-D24K1	NG-6	24 VDC	60	350	156,98
DS3-TA/10N-D48K1	NG-6	48 VDC	60	350	169,54

Electro. NG6 - corredera SA2

Directional valve NG6 - spool SA2
Electro. NG6 - tiroir SA2



ARTÍCULO PART N°	TAMAÑO SIZE	VOLTAJE (V) VOLTAGE (V)	CAUDAL MÁX. MAX. FLOW (l/min)	PRESIÓN MÁX. (bar) MAX. PRESSURE (bar)	€
DS3-SA2/10N-A110-50K1	NG-6	110 VAC	60	350	156,98
DS3-SA2/10N-A230-50K1	NG-6	230 VAC	60	350	156,98
DS3-SA2/10N-A24-50K1	NG-6	24 VAC	60	350	156,98
DS3-SA2/10N-A48-50K1	NG-6	48 VAC	60	350	169,54
DS3-SA2/10N-D12K1	NG-6	12 VDC	60	350	156,98
DS3-SA2/10N-D24K1	NG-6	24 VDC	60	350	156,98
DS3-SA2/10N-D48K1	NG-6	48 VDC	60	350	169,54

Electro. NG6 - corredera SA4

Directional valve NG6 - spool SA4
Electro. NG6 - tiroir SA4



ARTÍCULO PART N°	TAMAÑO SIZE	VOLTAJE (V) VOLTAGE (V)	CAUDAL MÁX. MAX. FLOW (l/min)	PRESIÓN MÁX. (bar) MAX. PRESSURE (bar)	€
DS3-SA4/10N-A230K1	NG-6	230 VAC	40	350	194,65
DS3-SA4/10N-D24K1	NG-6	24 VDC	40	350	182,09

Electroválvulas NG6 - Cetop 3

Directional valves for NG6 - Cetop 3
Electro-distributeurs NG6 - Cetop 3

Tanks, bellhousings,
couplings and filtersPumps/gear flow
dividers/multigear...

Electrical motors

Hydraulic Valves

Hydraulic directional
control valvesDirectional valves and
subplatesJoysticks and directional
valvesVacuum and heating
interchangers

Hydraulic cylinders

Electro. NG6 - corredera TB23

Directional valve NG6 - spool TB23
Electro. NG6 - tiroir TB23



ARTÍCULO PART N°	TAMAÑO SIZE	VOLTAJE (V) VOLTAGE (V)	CAUDAL MÁX. MAX. FLOW (l/min)	PRESIÓN MÁX. (bar) MAX. PRESSURE (bar)	€
DS3-TB23/10N-A110-50K1	NG-6	110 VAC	60	350	165,35
DS3-TB23/10N-A230-50K1	NG-6	230 VAC	60	350	165,35
DS3-TB23/10N-A24-50K1	NG-6	24 VAC	60	350	165,35
DS3-TB23/10N-A48-50K1	NG-6	48 VAC	60	350	177,91
DS3-TB23/10N-D12K1	NG-6	12 VDC	60	350	165,35
DS3-TB23/10N-D24K1	NG-6	24 VDC	60	350	165,35
DS3-TB23/10N-D48K1	NG-6	48 VDC	60	350	177,91

Electro. NG6 - corredera TB

Directional valve NG6 - spool TB
Electro. NG6 - tiroir TB



ARTÍCULO PART N°	TAMAÑO SIZE	VOLTAJE (V) VOLTAGE (V)	CAUDAL MÁX. MAX. FLOW (l/min)	PRESIÓN MÁX. (bar) MAX. PRESSURE (bar)	€
DS3-TB/10N-A110-50K1	NG-6	110 VAC	60	350	156,98
DS3-TB/10N-A230-50K1	NG-6	230 VAC	60	350	156,98
DS3-TB/10N-A24-50K1	NG-6	24 VAC	60	350	156,98
DS3-TB/10N-A48-50K1	NG-6	48 VAC	60	350	169,54
DS3-TB/10N-D12K1	NG-6	12 VDC	60	350	156,98
DS3-TB/10N-D24K1	NG-6	24 VDC	60	350	156,98
DS3-TB/10N-D48K1	NG-6	48 VDC	60	350	169,54

Electro. NG6 - corredera TA23

Directional valve NG6 - spool TA23
Electro. NG6 - tiroir TA23



ARTÍCULO PART N°	TAMAÑO SIZE	VOLTAJE (V) VOLTAGE (V)	CAUDAL MÁX. MAX. FLOW (l/min)	PRESIÓN MÁX. (bar) MAX. PRESSURE (bar)	€
DS3-TA23/10N-A110-50K1	NG-6	110 VAC	60	350	165,35
DS3-TA23/10N-A230-50K1	NG-6	230 VAC	60	350	165,35
DS3-TA23/10N-A24-50K1	NG-6	24 VAC	60	350	165,35
DS3-TA23/10N-A48-50K1	NG-6	48 VAC	60	350	177,91
DS3-TA23/10N-D12K1	NG-6	12 VDC	60	350	165,35
DS3-TA23/10N-D24K1	NG-6	24 VDC	60	350	165,35
DS3-TA23/10N-D48K1	NG-6	48 VDC	60	350	177,91

Electro. NG6 corredera RK

Directional valve NG6 - spool RK
Electro. NG6 - tiroir RK



ARTÍCULO PART N°	TAMAÑO SIZE	VOLTAJE (V) VOLTAGE (V)	CAUDAL MÁX. MAX. FLOW (l/min)	PRESIÓN MÁX. (bar) MAX. PRESSURE (bar)	€
DS3-RK/10N-A230-50K1	NG-6	220 VAC	60	350	278,25
DS3-RK/10N-D24K1	NG-6	24 VDC	60	350	307,80

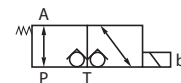
Electroválvulas NG6 - Cetop 3

Directional valves for NG6 - Cetop 3
Electro-distributeurs NG6 - Cetop 3

Válvula de retención - corredera 3A



Poppet directional control valve - spool 3A
Valve de retention - tiroir 3A

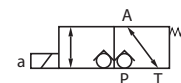


ARTÍCULO PART N°	TAMAÑO SIZE	VOLTAJE (V) VOLTAGE (V)	CAUDAL MÁX. MAX. FLOW (l/min)	PRESIÓN MÁX. (bar) MAX. PRESSURE (bar)	€
DT03-3A/10-110RAC	NG-6	110 RAC	25	250	607,60
DT03-3A/10-12VCC	NG-6	12 VCC	25	250	600,21
DT03-3A/10-220RAC	NG-6	220 RAC	25	250	607,60
DT03-3A/10-24VCC	NG-6	24 VCC	25	250	600,21

Válvula de retención - corredera 3C



Poppet directional control valve - spool 3C
Valve de retention - tiroir 3C



ARTÍCULO PART N°	TAMAÑO SIZE	VOLTAJE (V) VOLTAGE (V)	CAUDAL MÁX. MAX. FLOW (l/min)	PRESIÓN MÁX. (bar) MAX. PRESSURE (bar)	€
DT03-3C/10-110RAC	NG-6	110 RAC	25	250	607,60
DT03-3C/10-12VCC	NG-6	12 VCC	25	250	600,21
DT03-3C/10-220RAC	NG-6	220 RAC	25	250	607,60
DT03-3C/10-24VCC	NG-6	24 VCC	25	250	600,21

Bobinas corriente continua para DS3



DS3 coils (direct current)
Bobines courant continu pour DS3

ARTÍCULO PART N°	VOLTAJE (V) VOLTAGE (V)	POTENCIA (W) POWER (W)	ELECTROVÁLVULA DIRECT. VALVE	€
C22-D12K1/10	12 VDC	32,7	DS3	31,40
C22-D24K1/10	24 VDC	31	DS3	31,40
C22-D48K1/10	48 VDC	29,5	DS3	43,95

Bobinas corriente alterna para DS3



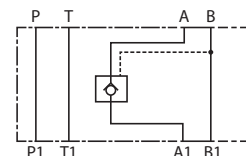
DS3 coils (alternating current)
Bobines courant alternatif pour DS3

ARTÍCULO PART N°	VOLTAJE (V) VOLTAGE (V)	POTENCIA (W) POWER (W)	ELECTROVÁLVULA DIRECT. VALVE	€
C20.6-A110-50K1/10	110 VAC	192	DS3	31,40
C20.6-A230-50K1/10	230 VAC	176	DS3	31,40
C20.6-A24-50K1/10	24 VAC	192	DS3	31,40
C20.6-A48-50K1/10	48 VAC	204	DS3	43,95

Válvula antirretorno simple pilotaje interno NG6 -A



Pilot operated simple check valve NG6 -A
Clapet anti-retour simple pilotaje interne NG6 -A



ARTÍCULO PART N°	TAMAÑO SIZE	PRESIÓN MÁX. (bar) MAX. PRESSURE (bar)	TOMAS A-B POINTS A-B	€
MVPP-SA/50	NG-6	350	A	143,64

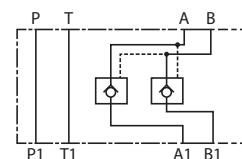
Electroválvulas NG6 - Cetop 3

Directional valves for NG6 - Cetop 3
Electro-distributeurs NG6 - Cetop 3

Válvula antirretorno doble pilotaje interno NG6



Pilot operated double check valve NG6
Clapet anti-retour double pilotage interne NG6

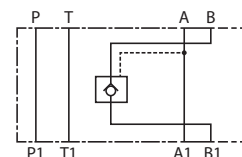


ARTÍCULO PART N°	TAMAÑO SIZE	PRESIÓN MAX. (bar) MAX. PRESSURE (bar)	TOMAS A-B POINTS A-B	€
MVPP-D/50	NG-6	350	A - B	153,98

Válvula antirretorno simple pilotaje interno NG6 -B



Pilot operated simple check valve NG6 -B
Clapet anti-retour simple pilotage interne NG6 -B

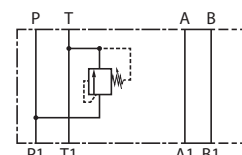


ARTÍCULO PART N°	TAMAÑO SIZE	PRESIÓN MAX. (bar) MAX. PRESSURE (bar)	TOMAS A-B POINTS A-B	€
MVPP-SB/50	NG-6	350	B	143,64

Limit. simple en P - descarga en T



Simple relief valve in P - discharge in T
Limiteur simple sur P - décharge sur T

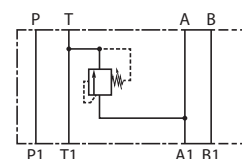


ARTÍCULO PART N°	TAMAÑO SIZE	PRESIÓN MAX. (bar) MAX. PRESSURE (bar)	CAMPO REG. (bar) REG. RATE (bar)	€
MCD3-SP/51N	NG-6	350	0-70 bar	188,37
MCD4-SP/51N	NG-6	350	0 - 140 bar	188,37
MCD5-SP/51N	NG-6	350	0 - 210 bar	188,37
MCD6-SP/51N	NG-6	350	0 - 350 bar	188,37

Limit. simple en A - descarga en T



Simple relief valve in A - discharge in T
Limiteur simple sur A - décharge sur T

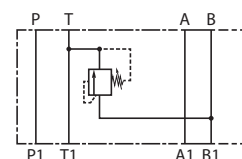


ARTÍCULO PART N°	TAMAÑO SIZE	PRESIÓN MAX. (bar) MAX. PRESSURE (bar)	CAMPO REG. (bar) REG. RATE (bar)	€
MCD3-SAT/51N	NG-6	350	0 - 70 bar	188,37
MCD4-SAT/51N/K	NG-6	350	0 - 70 bar	188,37
MCD4-SAT/51N	NG-6	350	0 - 140 bar	188,37
MCD5-SAT/50	NG-6	350	0 - 210 bar	188,37
MCD6-SAT/51N	NG-6	350	0 - 350 bar	188,37

Limit. simple en B - descarga en T



Simple relief valve in B - discharge in T
Limiteur simple sur B - décharge sur T



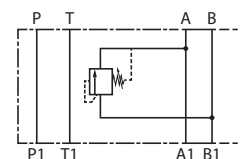
ARTÍCULO PART N°	TAMAÑO SIZE	PRESIÓN MAX. (bar) MAX. PRESSURE (bar)	CAMPO REG. (bar) REG. RATE (bar)	€
MCD3-SBT/51N	NG-6	350	0 - 70 bar	188,37
MCD4-SBT/51N	NG-6	350	0 - 140 bar	188,37
MCD5-SBT/51N	NG-6	350	0 - 210 bar	188,37
MCD6-SBT/51N	NG-6	350	0 - 350 bar	188,37

Electroválvulas NG6 - Cetop 3

Directional valves for NG6 - Cetop 3
Electro-distributeurs NG6 - Cetop 3

Limit. simple en B - descarga en A

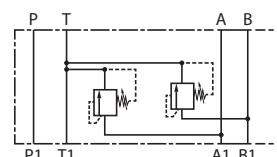
Simple relief valve in B - discharge in A
Limiteur simple sur B - décharge sur A



ARTÍCULO PART N°	TAMAÑO SIZE	PRESIÓN MAX. (bar) MAX. PRESSURE (bar)	CAMPO REG. (bar) REG. RATE (bar)	€
MCD3-SB/51N	NG-6	350	0 - 70 bar	226,05
MCD4-SB/51N	NG-6	350	0 - 140 bar	226,05
MCD5-SB/51N	NG-6	350	0 - 210 bar	226,05
MCD6-SB/51N	NG-6	350	0 - 350 bar	226,05

Limit. doble en A y B - descarga en T

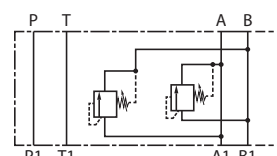
Double relief valve in A and B - discharge in T
Limiteur double sur A et B - décharge sur T



ARTÍCULO PART N°	TAMAÑO SIZE	PRESIÓN MAX. (bar) MAX. PRESSURE (bar)	CAMPO REG. (bar) REG. RATE (bar)	€
MCD3-DT/51N	NG-6	350	0 - 70 bar	286,05
MCD4-DT/51N	NG-6	350	0 - 140 bar	286,05
MCD5-DT/51N	NG-6	350	0 - 210 bar	286,05
MCD6-DT/51N	NG-6	350	0 - 350 bar	286,05

Limit. doble en A y B - descarga cruzada

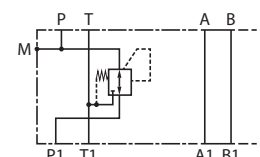
Double relief valve in A and B - crossed discharge
Limiteur double sur A et B - décharges croisées



ARTÍCULO PART N°	TAMAÑO SIZE	PRESIÓN MAX. (bar) MAX. PRESSURE (bar)	CAMPO REG. (bar) REG. RATE (bar)	€
MCD3-D/51N	NG-6	350	0 - 70 bar	293,03
MCD4-D/51N	NG-6	350	0 - 140 bar	293,03
MCD5-D/51N	NG-6	350	0 - 210 bar	293,03
MCD6-D/51N	NG-6	350	0 - 350 bar	293,03

Reductora de presión en P

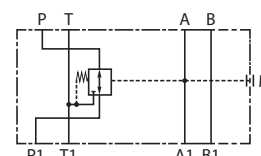
Pressure reducing valve in P
Réducteur de pression sur P



ARTÍCULO PART N°	TAMAÑO SIZE	PRESIÓN MAX. (bar) MAX. PRESSURE (bar)	CAMPO REG. (bar) REG. RATE (bar)	€
MZD2/50	NG-6	350	3 - 35 bar	220,63
MZD3/50	NG-6	350	10 - 70 bar	220,63
MZD4/50	NG-6	350	30 - 140 bar	220,63
MZD5/50	NG-6	350	60 - 280 bar	220,63

Reductora de presión en A

Pressure reducing valve in A
Réducteur de pression sur A



ARTÍCULO PART N°	TAMAÑO SIZE	PRESIÓN MAX. (bar) MAX. PRESSURE (bar)	CAMPO REG. (bar) REG. RATE (bar)	€
MZD2/A/50	NG-6	350	3 - 35 bar	234,42
MZD3/A/50	NG-6	350	10 - 70 bar	234,42
MZD4/A/50	NG-6	350	30 - 140 bar	234,42
MZD5/A/50	NG-6	350	60 - 280 bar	234,42

Tanks, bellhousings,
couplings and filtersPumps/gear flow
dividers/multigear...

Electrical motors

Hydraulic Valves

Hydraulic directional
control valvesDirectional valves and
subplatesJoysticks and directional
valvesVacuum and heating
interchangers

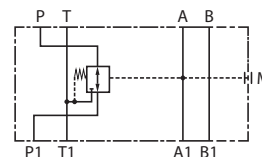
Hydraulic cylinders

Electroválvulas NG6 - Cetop 3

Directional valves for NG6 - Cetop 3
Electro-distributeurs NG6 - Cetop 3

Reductora de presión en B

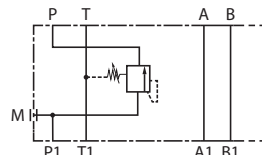
Pressure reducing valve in B
Réducteur de pression sur B



ARTÍCULO PART N°	TAMAÑO SIZE	PRESIÓN MAX. (bar) MAX. PRESSURE (bar)	CAMPO REG. (bar) REG. RATE (bar)	€
MZD2/B/50	NG-6	350	3 - 35 bar	234,42
MZD3/B/50	NG-6	350	10 - 70 bar	234,42
MZD4/B/50	NG-6	350	30 - 140 bar	234,42
MZD5/B/50	NG-6	350	60 - 280 bar	234,42

Válvula de secuencia NG6

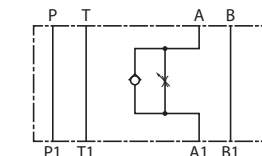
Sequence valve NG6
Valve de séquence NG6



ARTÍCULO PART N°	TAMAÑO SIZE	PRESIÓN MAX. (bar) MAX. PRESSURE (bar)	CAMPO REG. (bar) REG. RATE (bar)	€
MSD3/50	NG-6	350	10 - 70 bar	237,50
MSD4/50	NG-6	350	30 - 140 bar	237,50
MSD5/50	NG-6	350	50 - 280 bar	237,50

Válvula regul. de caudal simple unidirec. NG6 -toma A

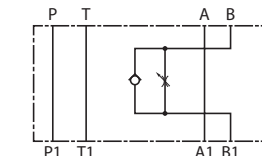
Throttle simple flow control valve NG6 -A
Étrangleur de débit simple unidirectionnel NG6 -A



ARTÍCULO PART N°	TAMAÑO SIZE	SENTIDO DIRECTION	TOMAS A-B POINTS A-B	€
MERS-SA/50	NG-6	Salida	A	151,40

Válvula regul. de caudal simple unidirec. NG6 -toma B

Throttle simple flow control valve NG6 -B
Étrangleur de débit simple unidirectionnel NG6 -B



ARTÍCULO PART N°	TAMAÑO SIZE	SENTIDO DIRECTION	TOMAS A-B POINTS A-B	€
MERS-SB/50	NG-6	Salida	B	151,40

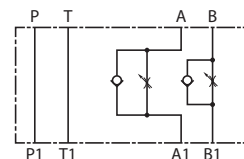
Electroválvulas NG6 - Cetop 3

Directional valves for NG6 - Cetop 3
Electro-distributeurs NG6 - Cetop 3

Válvula regul. de caudal doble unidirec. NG6 - salida



Throttle double flow control valve NG6-out
Étrangleur de débit double unidirectionnel NG6 -sortie

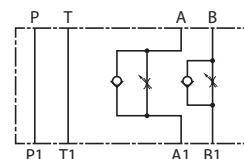


ARTÍCULO PART N°	TAMAÑO SIZE	SENTIDO DIRECTION	TOMAS A-B POINTS A-B	€
MERS-D/50	NG-6	Salida	A - B	169,71

Válvula regul. de caudal doble unidirec. NG6 - entrada



Throttle double flow control valve NG6-in
Étrangleur de débit double unidirectionnel NG6 -entrée



ARTÍCULO PART N°	TAMAÑO SIZE	SENTIDO DIRECTION	TOMAS A-B POINTS A-B	€
MERS-RD/50	NG-6	Entrada	A - B	188,03

Placas base NG6 para 1 electro. - sin limitadora



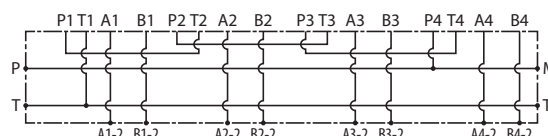
Subplates for an directional valve NG6 without relief valve
Embases NG6 pour 1 electro. - sans limiteur

ARTÍCULO PART N°	ROSCA THREAD	TAMAÑO SIZE	DESCRIPCIÓN DESCRIPTION	TOMAS A-B POINTS A-B	€
PBKV-6-38TL	3/8"	NG-6	Para 1 electro	Laterales	49,36
PBKV-6-38TV	3/8"	NG-6	Para 1 electro	Verticales	43,65

Placa base NG6 en serie o tandem - sin limitadora



Subplates for several directional valve NG6 without relief valve
Embases NG6 montage en serie - sans limiteur

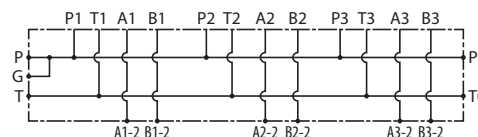


ARTÍCULO PART N°	ROSCA THREAD	TAMAÑO SIZE	TOMAS A-B POINTS A-B	Nº ELECTROVÁLVULAS DIRECT. VALVES NR.	€
PF2SL	3/8"	NG-6	Laterales	2	137,41
PF3SL	3/8"	NG-6	Laterales	3	168,61
PF4SL	3/8"	NG-6	Laterales	4	223,14

Placa base NG6 en montaje en paralelo - sin limitadora



Subplates for several directional valve NG6 without relief valve (paralel)
Embases NG6 montage en parallèle - sans limiteur



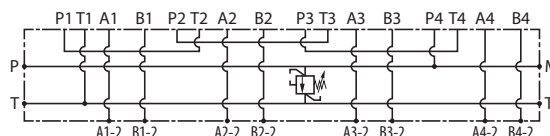
ARTÍCULO PART N°	ROSCA THREAD	TAMAÑO SIZE	TOMAS A-B POINTS A-B	Nº ELECTROVÁLVULAS DIRECT. VALVES NR.	€
PF2PL	3/8"	NG-6	Laterales	2	126,24
PF3PL	3/8"	NG-6	Laterales	3	165,60
PF4PL	3/8"	NG-6	Laterales	4	202,92
PF5PL	3/8"	NG-6	Laterales	5	236,20
PF6PL	3/8"	NG-6	Laterales	6	294,50
PF7PL	3/8"	NG-6	Laterales	7	388,40

Electroválvulas NG6 - Cetop 3

Directional valves for NG6 - Cetop 3
Electro-distributeurs NG6 - Cetop 3

Placa base NG6 montaje en serie o tandem - con limitadora

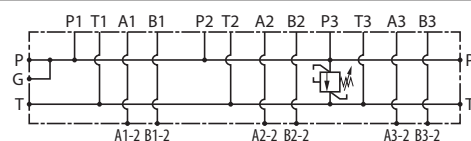
Subplates for several directional valve NG6 with relief valve
Embases NG6 montaje en serie - avec limiteur



ARTÍCULO PART N°	ROSCA THREAD	TAMAÑO SIZE	TOMAS A-B POINTS A-B	Nº ELECTROVÁLVULAS DIRECT. VALVES NR.	€
PF2SLCL180	3/8"	NG-6	Laterales	2	200,43
PF3SLCL200	3/8"	NG-6	Laterales	3	231,51
PF4SLCL180	3/8"	NG-6	Laterales	4	275,66

Placa base NG6 montaje en paralelo - con limitadora

Subplates for several directional valve NG6 with paralel relief valve
Embases NG6 montage en parallèle - avec limiteur



ARTÍCULO PART N°	ROSCA THREAD	TAMAÑO SIZE	TOMAS A-B POINTS A-B	Nº ELECTROVÁLVULAS DIRECT. VALVES NR.	€
PF2PLCL210	3/8"	NG-6	Laterales	2	190,90
PF3PLCL210	3/8"	NG-6	Laterales	3	220,50
PF4PLCL210	3/8"	NG-6	Laterales	4	262,52
PF5PLCL180	3/8"	NG-6	Laterales	5	314,14
PF6PLCL200	3/8"	NG-6	Laterales	6	380,06
PF7PLCL180	3/8"	NG-6	Laterales	7	474,17

Placas anulación electroválvula NG6

Blanking plates NG6
Plaque pour anulacion d'électro.NG6



ARTÍCULO PART N°	TAMAÑO SIZE	EJECUCIÓN EXECUTION	€
321013	NG-6	P con B y A cont	43,00

Tanks, bellhousings,
couplings and filtersPumps/gear flow
dividers/multigear...

Electrical motors

Hydraulic valves

Hydraulic directional
control valvesDirectional valves and
subplatesJoysticks and directional
valvesVacuum and heating
interchangers

Hydraulic cylinders

Electroválvulas NG10 - Cetop 5

Directional valves for NG10 - Cetop 5
Electro-distributeurs NG10 - Cetop 5

Electro. NG10- corredera S1

Directional control valve NG10- spool S1
Electro. NG10- tiroir S1



ARTÍCULO PART N°	TAMAÑO SIZE	VOLTAJE (V) VOLTAGE (V)	CAUDAL MÁX. MAX. FLOW (l/min)	PRESIÓN MÁX. (bar) MAX. PRESSURE (bar)	€
DS5-S1/11N-A110-50K1	NG-10	110 VAC	120	320	396,00
DS5-S1/11N-A230-50K1	NG-10	220 VAC	120	320	396,00
DS5-S1/11N-A24-50K1	NG-10	24 VAC	120	320	396,00
DS5-S1/11N-A48-50K1	NG-10	48 VAC	120	320	423,63
DS5-S1/11N-D12K1	NG-10	12 VDC	120	320	396,00
DS5-S1/11N-D24K1	NG-10	24 VDC	120	320	396,00
DS5-S1/11N-D48K1	NG-10	48 VDC	120	320	423,63

Electro. NG10- corredera S2

Directional control valve NG10- spool S2
Electro. NG10- tiroir S2



ARTÍCULO PART N°	TAMAÑO SIZE	VOLTAJE (V) VOLTAGE (V)	CAUDAL MÁX. MAX. FLOW (l/min)	PRESIÓN MÁX. (bar) MAX. PRESSURE (bar)	€
DS5-S2/11N-A110-50K1	NG-10	110 VAC	120	320	396,00
DS5-S2/11N-A230-50K1	NG-10	220 VAC	120	320	396,00
DS5-S2/11N-A24-50K1	NG-10	24 VAC	120	320	396,00
DS5-S2/11N-A48-50K1	NG-10	48 VAC	120	320	423,63
DS5-S2/11N-D12K1	NG-10	12 VDC	120	320	396,00
DS5-S2/11N-D24K1	NG-10	24 VDC	120	320	396,00
DS5-S2/11N-D48K1	NG-10	48 VDC	120	320	423,63

Electro. NG10- corredera S3

Directional control valve NG10- spool S3
Electro. NG10- tiroir S3



ARTÍCULO PART N°	TAMAÑO SIZE	VOLTAJE (V) VOLTAGE (V)	CAUDAL MÁX. MAX. FLOW (l/min)	PRESIÓN MÁX. (bar) MAX. PRESSURE (bar)	€
DS5-S3/11N-A110-50K1	NG-10	110 VAC	120	320	396,00
DS5-S3/11N-A230-50K1	NG-10	220 VAC	120	320	396,00
DS5-S3/11N-A24-50K1	NG-10	24 VAC	120	320	396,00
DS5-S3/11N-A48-50K1	NG-10	48 VAC	120	320	423,63
DS5-S3/11N-D12K1	NG-10	12 VDC	120	320	396,00
DS5-S3/11N-D24K1	NG-10	24 VDC	120	320	396,00
DS5-S3/11N-D48K1	NG-10	48 VDC	120	320	423,63

Electro. NG10- corredera S4

Directional control valve NG10- spool S4
Electro. NG10- tiroir S4



ARTÍCULO PART N°	TAMAÑO SIZE	VOLTAJE (V) VOLTAGE (V)	CAUDAL MÁX. MAX. FLOW (l/min)	PRESIÓN MÁX. (bar) MAX. PRESSURE (bar)	€
DS5-S4/11N-A110-50K1	NG-10	110 VAC	120	320	442,05
DS5-S4/11N-A230-50K1	NG-10	220 VAC	120	320	442,05
DS5-S4/11N-A48-50K1	NG-10	48 VAC	120	320	469,68
DS5-S4/11N-D12K1	NG-10	12 VDC	120	320	442,05
DS5-S4/11N-D24K1	NG-10	24 VDC	120	320	442,05
DS5-S4/11N-D48K1	NG-10	48 VDC	120	320	469,68

Tanks, bellhousings,
couplings and filtersPumps/gear flow
dividers/multigear...

Electrical motors

Hydraulic Valves

Hydraulic directional
control valvesDirectional valves and
subplatesJoysticks and directional
valvesVacuum and heating
interchangers

Hydraulic cylinders

Electroválvulas NG10 - Cetop 5

Directional valves for NG10 - Cetop 5
Electro-distributeurs NG10 - Cetop 5

Electro. NG10- corredera TA

Directional control valve NG10- spool TA
Electro. NG10- tiroir TA



ARTÍCULO PART N°	TAMAÑO SIZE	VOLTAJE (V) VOLTAGE (V)	CAUDAL MÁX. MAX. FLOW (l/min)	PRESIÓN MÁX. (bar) MAX. PRESSURE (bar)	€
DS5-TA/11N-A110-50K1	NG-10	110 VAC	120	320	290,10
DS5-TA/11N-A230-50K1	NG-10	220 VAC	120	320	290,10
DS5-TA/11N-A24-50K1	NG-10	24 VAC	120	320	290,10
DS5-TA/11N-A48-50K1	NG-10	48 VAC	120	320	303,91
DS5-TA/11N-D12K1	NG-10	12 VDC	120	320	290,10
DS5-TA/11N-D24K1	NG-10	24 VDC	120	320	290,10
DS5-TA/11N-D48K1	NG-10	48 VDC	120	320	303,91

Electro. NG10- corredera SA2

Directional control valve NG10 spool SA2
Electro. NG10- tiroir SA2



ARTÍCULO PART N°	TAMAÑO SIZE	VOLTAJE (V) VOLTAGE (V)	CAUDAL MÁX. MAX. FLOW (l/min)	PRESIÓN MÁX. (bar) MAX. PRESSURE (bar)	€
DS5-SA2/11N-A110-50K1	NG-10	110 VAC	120	320	290,10
DS5-SA2/11N-A230-50K1	NG-10	220 VAC	120	320	290,10
DS5-SA2/11N-A24-50K1	NG-10	24 VAC	120	320	290,10
DS5-SA2/11N-A48-50K1	NG-10	48 VAC	120	320	303,91
DS5-SA2/11N-D12K1	NG-10	12 VDC	120	320	290,10
DS5-SA2/11N-D24K1	NG-10	24 VDC	120	320	290,10
DS5-SA2/11N-D48K1	NG-10	48 VDC	120	320	303,91

Electro. NG10- corredera TB

Directional control valve NG10- spool TB
Electro. NG10- tiroir TB



ARTÍCULO PART N°	TAMAÑO SIZE	VOLTAJE (V) VOLTAGE (V)	CAUDAL MÁX. MAX. FLOW (l/min)	PRESIÓN MÁX. (bar) MAX. PRESSURE (bar)	€
DS5-TB/11N-A110-50K1	NG-10	110 VAC	120	320	341,29
DS5-TB/11N-A230-50K1	NG-10	220 VAC	120	320	290,10
DS5-TB/11N-A24-50K1	NG-10	24 VAC	120	320	290,10
DS5-TB/11N-A48-50K1	NG-10	48 VAC	120	320	303,91
DS5-TB/11N-D12K1	NG-10	12 VDC	120	320	290,10
DS5-TB/11N-D24K1	NG-10	24 VDC	120	320	341,29
DS5-TB/11N-D48K1	NG-10	48 VDC	120	320	303,91

Bobinas corriente continua para DS5/NG10

DS5/NG10 coils (direct current)
Bobines courant continu pour DS5/NG10



ARTÍCULO PART N°	DESCRIPCIÓN DESCRIPTION	VOLTAJE (V) VOLTAGE (V)	ELECTROVÁLVULA DIRECT. VALVE	€
C31-D12K1/10	Bobina NG10	12 VCC	NG-10	57,56
C31-D48K1/10	Bobina NG10	48 VDC	NG-10	71,37

Electroválvulas NG10 - Cetop 5

Directional valves for NG10 - Cetop 5
Electro-distributeurs NG10 - Cetop 5

Bobinas corriente alterna para DS5/NG10



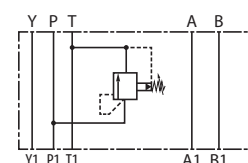
DS5/NG10 coils (alternating current)
Bobines courant alternatif pour DS5/NG10

ARTÍCULO PART N°	DESCRIPCIÓN DESCRIPTION	VOLTAJE (V) VOLTAGE (V)	ELECTROVÁLVULA DIRECT. VALVE	€
C25.4-A110-50K1/10	Bobina NG10	110 VAC	NG-10	57,56
C25.4-A230-50K1/10	Bobina NG10	230 VAC	NG-10	59,86
C25.4-A24-50K1/10	Bobina NG10	24 VAC	NG-10	59,86
C25.4-A48-50K1/10	Bobina NG10	48 VAC	NG-10	71,37

Limitadora simple en P - descarga en T



Simple relief valve in P - discharge in T
Limiteur simple sur P - décharge sur T

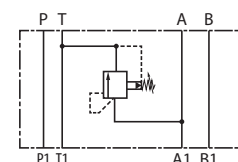


ARTÍCULO PART N°	TAMAÑO SIZE	CAUDAL MÁX. MAX. FLOW (l/min)	PRESIÓN MÁX. (bar) MAX. PRESSURE (bar)	CAMPO REG. (bar) REG. RATE (bar)	€
RQ4M3-SP/51	NG-10	100	320	0 - 70 bar	315,35
RQ4M4-SP/51	NG-10	100	320	0 - 140 bar	315,35
RQ4M5-SP/51	NG-10	100	320	0 - 210 bar	315,35
RQ4M6-SP/51	NG-10	100	320	0 - 320 bar	315,35

Limitadora simple en A - descarga en T



Simple relief valve in A - discharge in T
Limiteur simple sur A - décharge sur T

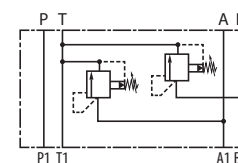


ARTÍCULO PART N°	TAMAÑO SIZE	CAUDAL MÁX. MAX. FLOW (l/min)	PRESIÓN MÁX. (bar) MAX. PRESSURE (bar)	CAMPO REG. (bar) REG. RATE (bar)	€
RQ4M3-SAT/51	NG-10	100	320	0 - 70 bar	315,35
RQ4M4-SAT/51	NG-10	100	320	0 - 140 bar	315,35
RQ4M5-SAT/51	NG-10	100	320	0 - 210 bar	315,35
RQ4M6-SAT/51	NG-10	100	320	0 - 320 bar	315,35

Limitadora doble en A y B - descarga en T



Double relief valve in A and B - discharge in T
Limiteur double sur A et B - décharge sur T



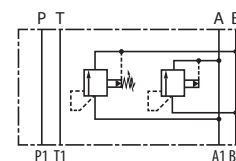
ARTÍCULO PART N°	TAMAÑO SIZE	CAUDAL MÁX. MAX. FLOW (l/min)	PRESIÓN MÁX. (bar) MAX. PRESSURE (bar)	CAMPO REG. (bar) REG. RATE (bar)	€
RQ4M3-DT/51	NG-10	100	320	0 - 70 bar	426,98
RQ4M4-DT/51	NG-10	100	320	0 - 140 bar	426,98
RQ4M5-DT/51	NG-10	100	320	0 - 210 bar	426,98
RQ4M6-DT/51	NG-10	100	320	0 - 320 bar	426,98

Electroválvulas NG10 - Cetop 5

Directional valves for NG10 - Cetop 5
Electro-distributeurs NG10 - Cetop 5

Limit. doble en A y B -descarga cruzada

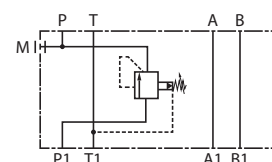
Double relief valve in A and B - crossed discharge
Limiteur double sur A et B - décharges croisées



ARTÍCULO PART N°	TAMAÑO SIZE	CAUDAL MÁX. MAX. FLOW (l/min)	PRESIÓN MÁX. (bar) MAX. PRESSURE (bar)	CAMPO REG. (bar) REG. RATE (bar)	€
RQ4M3-D/51	NG-10	100	320	0 - 70 bar	454,89
RQ4M4-D/51	NG-10	100	320	0 - 140 bar	454,89
RQ4M5-D/51	NG-10	100	320	0 - 210 bar	454,89
RQ4M6-D/51	NG-10	100	320	0 - 320 bar	454,89

Val. reductora de presión pilotada NG10

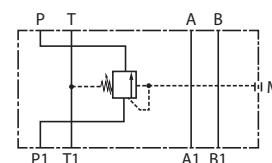
Pilot operated pressure reducing valve NG10
Réducteur de pression piloté NG10



ARTÍCULO PART N°	TAMAÑO SIZE	CAUDAL MÁX. MAX. FLOW (l/min)	PRESIÓN MÁX. (bar) MAX. PRESSURE (bar)	CAMPO REG. (bar) REG. RATE (bar)	€
Z4M3-I/50	NG-10	80	320	5 - 70 bar	428,13
Z4M4-I/50	NG-10	80	320	8 - 140 bar	428,13
Z4M5-I/50	NG-10	80	320	10 - 210 bar	428,13
Z4M6-I/50	NG-10	80	320	15 - 320 bar	428,13

Válvula de secuencia

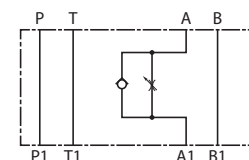
Sequence valve
Valve de séquence



ARTÍCULO PART N°	TAMAÑO SIZE	CAUDAL MÁX. MAX. FLOW (l/min)	PRESIÓN MÁX. (bar) MAX. PRESSURE (bar)	CAMPO REG. (bar) REG. RATE (bar)	€
SD4M3/50	NG-10	80	320	0 - 70 bar	698,09
SD4M4/50	NG-10	80	320	0 - 140 bar	698,09
SD4M5/50	NG-10	80	320	0 - 210 bar	698,09

Válvula reguladora de caudal simple unidireccional NG10- A

Throttle simple flow control valve NG10 -A
Étrangleur de débit simple unidirectionnel NG10 -A



ARTÍCULO PART N°	TAMAÑO SIZE	CAUDAL MÁX. MAX. FLOW (l/min)	PRESIÓN MÁX. (bar) MAX. PRESSURE (bar)	SENTIDO DIRECTION	TOMAS A-B POINTS A-B	€
ERS4M-SA/40	NG-10	80	320	Salida	A	292,53

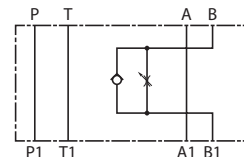
Electroválvulas NG10 - Cetop 5

Directional valves for NG10 - Cetop 5
Electro-distributeurs NG10 - Cetop 5

Válvula reguladora de caudal simple unidireccional NG10 -B



Throttle simple flow control valve NG10 -B
Étrangleur de débit simple unidirectionnel NG10 -B

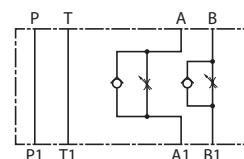


ARTÍCULO PART N°	TAMAÑO SIZE	CAUDAL MÁX. MAX. FLOW (l/min)	PRESIÓN MÁX. (bar) MAX. PRESSURE (bar)	SENTIDO DIRECTION	TOMAS A-B POINTS A-B	€
ERS4M-SB/40	NG-10	80	320	Salida	B	292,53

Válvula reguladora de caudal doble unidireccional NG10 -salida



Throttle double flow control valve NG10 -out
Étrangleur de débit double unidirectionnel NG10 -sortie

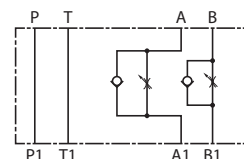


ARTÍCULO PART N°	TAMAÑO SIZE	CAUDAL MÁX. MAX. FLOW (l/min)	PRESIÓN MÁX. (bar) MAX. PRESSURE (bar)	SENTIDO DIRECTION	TOMAS A-B POINTS A-B	€
ERS4M-D/40	NG-10	80	320	Salida	A - B	336,86

Válvula reguladora de caudal doble unidireccional NG10 -entrada



Throttle double flow control valve NG10 -out
Étrangleur de débit double unidirectionnel NG10 -entrée

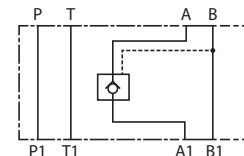


ARTÍCULO PART N°	TAMAÑO SIZE	CAUDAL MÁX. MAX. FLOW (l/min)	PRESIÓN MÁX. (bar) MAX. PRESSURE (bar)	SENTIDO DIRECTION	TOMAS A-B POINTS A-B	€
ERS4M-RD/40	NG-10	80	320	Entrada	A - B	354,59

Válvula antirretorno simple pilotada NG10 -A



Pilot operated simple check valve NG10 -A
Clapet anti-retour simple piloté NG10 -A

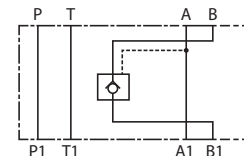


ARTÍCULO PART N°	TAMAÑO SIZE	PRESIÓN MÁX. (bar) MAX. PRESSURE (bar)	TOMAS A-B POINTS A-B	€
VPP4M-SA/40	NG-10	320	A	398,91

Válvula antirretorno simple pilotada NG10 -B



Pilot operated simple check valve NG10 -B
Clapet anti-retour simple piloté NG10 -B



ARTÍCULO PART N°	TAMAÑO SIZE	PRESIÓN MÁX. (bar) MAX. PRESSURE (bar)	TOMAS A-B POINTS A-B	€
VPP4M-SB/40	NG-10	320	B	378,59

Tanks, bellhousings,
couplings and filtersPumps/gear flow
dividers/multigear...

Electrical motors

Hydraulic Valves

Hydraulic directional
control valvesDirectional valves and
subplatesJoysticks and directional
valvesVacuum and heating
interchangers

Hydraulic cylinders

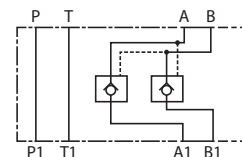
Electroválvulas NG10 - Cetop 5

Directional valves for NG10 - Cetop 5
Electro-distributeurs NG10 - Cetop 5

Válvula antirretorno doble pilotada NG10



Pilot operated double check valve NG10
Clapet anti-retour double piloté NG10

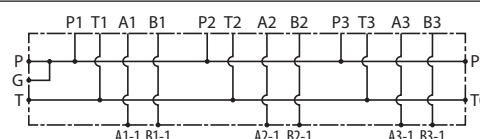


ARTÍCULO PART N°	TAMAÑO SIZE	PRESIÓN MAX. (bar) MAX. PRESSURE (bar)	TOMAS A-B POINTS A-B	€
VPP4M-D/40	NG-10	320	A - B	398,91

Placa base NG10 para 1 electro. - sin limitadora



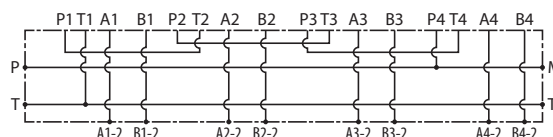
Subplates for directional valve NG10 without relief valve
Embase NG10 pour 1 electro. - sans limiteur



ARTÍCULO PART N°	ROSCA THREAD	TAMAÑO SIZE	DESCRIPCIÓN DESCRIPTION	TOMAS A-B POINTS A-B	€
PBKV-10-12TV	1/2"	NG-10	Para 1 electro	Verticales	62,36

Placa base NG10 montaje en serie o tandem - sin limitadora

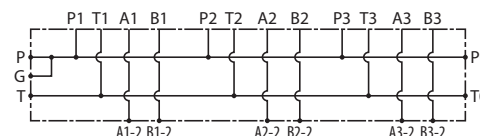
Subplates for several directional valve NG10 without relief valve
Embase NG10 montage en serie - sans limiteur



ARTÍCULO PART N°	ROSCA THREAD	TAMAÑO SIZE	TOMAS A-B POINTS A-B	Nº ELECTROVÁLVULAS DIRECT. VALVES NR.	€
PFNG103SL	1/2"	NG-10	Laterales	3	432,05
PFNG104SL	1/2"	NG-10	Laterales	4	554,42

Placa base NG10 montaje en paralelo - sin limitadora

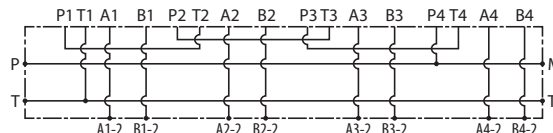
Subplates for several directional valve NG10 without relief valve parallel
Embase NG10 montage en parallèle - sans limiteur



ARTÍCULO PART N°	ROSCA THREAD	TAMAÑO SIZE	TOMAS A-B POINTS A-B	Nº ELECTROVÁLVULAS DIRECT. VALVES NR.	€
PFNG102PL	1/2"	NG-10	Laterales	2	293,56
PFNG103PL	1/2"	NG-10	Laterales	3	371,64
PFNG104PL	1/2"	NG-10	Laterales	4	459,97
PFNG105PL	1/2"	NG-10	Laterales	5	557,74

Placa base NG10 montaje en serie o tandem - con limitadora

Subplates for several directional valve NG10 with relief valve
Embase NG10 montage en serie - avec limiteur



ARTÍCULO PART N°	ROSCA THREAD	TAMAÑO SIZE	TOMAS A-B POINTS A-B	Nº ELECTROVÁLVULAS DIRECT. VALVES NR.	€
PFNG104SLCL180	1/2"	NG-10	Laterales	4	722,76

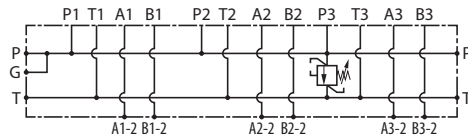
Electroválvulas NG10 - Cetop 5

Directional valves for NG10 - Cetop 5
Electro-distributeurs NG10 - Cetop 5

Placa base NG10 montaje en paralelo - con limitadora



Subplates for several directional valves NG10 with relief valve
Embase NG10 montaje en parallèle - avec limiteur



ARTÍCULO PART N°	ROSCA THREAD	TAMAÑO SIZE	TOMAS A-B POINTS A-B	N° ELECTROVÁLVULAS DIRECT. VALVES NR.	€
PFNG102PLCL180	1/2"	NG-10	Laterales	2	359,09
PFNG103PLCL180	1/2"	NG-10	Laterales	3	443,37
PFNG104PLCL180	1/2"	NG-10	Laterales	4	531,99
PFNG105PLCL180	1/2"	NG-10	Laterales	5	620,61

Placas anulación electroválvula NG10



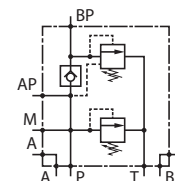
Blanking plates NG10
Plaque pour anulation d'electro. NG10

ARTÍCULO PART N°	TAMAÑO SIZE	EJECUCIÓN EXECUTION	€
5928004	NG-10	P con B y A con T	80,52
TCNG10PL	NG-10	Independiente	53,84

Bloques de alta y baja NG10 (con toma de manómetro)



High/low pressure blocks NG10 (with chek-coupling for manometer)
Blocs forés de control NG10 (avec prise pour manomètre)



ARTÍCULO PART N°	TAMAÑO SIZE	€
VD CTP 05 NG-10	NG-10	659,86

Tanks, bellhousings,
couplings and filtersPumps/gear flow
dividers/multigear...

Electrical motors

Hydraulic valves

Hydraulic directional
control valvesDirectional valves and
subplatesJoysticks and directional
valvesVacuum and heating
interchangers

Hydraulic cylinders

Placas base para TN

Subplates for TN
Embases pour TN

Tanks, bellhousings,
couplings and filtersPumps/gear flow
dividers/multigear...

Electrical motors

Hydraulic Valves

Hydraulic directional
control valvesDirectional valves and
subplatesJoysticks and directional
valvesVacuum and heating
interchangers

Hydraulic cylinders

Para electroválvula TN16 sin limitadora



For directional valve TN16 without relief valve
Embase TN16 pour 1 electro. - sans limiteur

ARTÍCULO PART N°	ROSCA THREAD	TAMAÑO SIZE	TOMAS A-B POINTS A-B	€
316001	1/2	TN-16		105,94
316002	3/4"	TN-16	Verticales	112,64

Placa base TN25 para 1 electro.- sin limitadora



For directional valve TN25 without relief valve
Embase TN25 pour 1 electro. - sans limiteur

ARTÍCULO PART N°	ROSCA THREAD	TAMAÑO SIZE	TOMAS A-B POINTS A-B	€
141002	1"	TN-25	Verticales	188,71

Placa base TN32 para 1 electro. - sin limitadora



Subplate TN32 for directional valve without relief valve
Plaque base TN32 pour 1 electro. - sans limiteur

ARTÍCULO PART N°	ROSCA THREAD	TAMAÑO SIZE	TOMAS A-B POINTS A-B	€
142002	1" 1/2	TN-32	Verticales	508,95
142003	2"	TN-32	Verticales	611,54

Conectores eléctricos

Electric connectors
Connecteurs électriques

Conectores estándar



Standard connectors
Connecteurs standard

ARTÍCULO PART N°	DESCRIPCIÓN DESCRIPTION	PROTECCIÓN (IP) PROTECTION (IP)	COLOR COLOUR	€
ECA/A/10	Para 3 patillas	IP 65 - IEC 60529	Gris	1,76
CON4P	Para 4 patillas	IP 65 - IEC 60529	Negro	2,43
ECA/B/10	Para 3 patillas	IP 65 - IEC 60529	Negro	1,76

Conectores con led



Connectors with led
Connecteurs avec led

ARTÍCULO PART N°	VOLTAJE (V) VOLTAGE (V)	€
CONLEDCC	12 - 24 VDC	5,37
CONLEDCEST	12CC - 24CC	5,37
CONLED220CA	70-250V	5,37

Conectores con rectificador y led



Connectors with rectifier and led
Connecteurs avec rectificateur et led

ARTÍCULO PART N°	VOLTAJE (V) VOLTAGE (V)	PROTECCIÓN (IP) PROTECTION (IP)	COLOR COLOUR	€
ECD/B/10	220/50 V	IP 65 - IEC 60529	Negro	12,55
CONLEDREC110	110/50 V	IP 65 - IEC 60529	Transparente	10,33
CONLEDREC220	220/50 V	IP 65 - IEC 60529	Transparente	10,33
CONLEDREC24	24/50 V	IP 65 - IEC 60529	Transparente	10,33

Tanks, bellhousings,
couplings and filtersPumps/gear flow
dividers/multigear...

Electrical motors

Hydraulic valves

Hydraulic directional
control valvesDirectional valves and
subplatesJoysticks and directional
valvesVacuum and heating
interchangers

Hydraulic cylinders