

# Sauer-Sundstrand Service Parts List

Date: 19 April 99

## M91-46507

<u>Item</u>	<u>Part Number</u>	<u>Description</u>	<u>Usage</u>
201	4510073	Variable swashplate assembly	1
202	4460696	Journal bearing	2
801	4460643	Suction filter adaptor	1
806	9007206-3116	Screw	3
810	9005100-5600	Plug	1
901	4460455-0004	Servo cover	1
902	4460455-0002	Servo cover	1
905	4461034	Spring guide	1
906	4460303-0001	Servo stop	1
907	4460164	Servo spring	1
908	4461033	Screw	1
909	4460302	Spring guide	1
910	9006220-0131	Retaining ring	1
911	9003535-3700	Lock nut	1
919	5000480	Nut	1
920	9007276-0134	Screw	10
1001	4460547-0002	Bypass valve (.031" orifice)	1
1103	4510004-0300	Relief valve kit - 300 bar	1
1104	4510004-0300	Relief valve kit - 300 bar	1
1207	4460468	Valve spool	1
1210	9007276-0123	Screw	1
1213	9003575-0102	Nut	1
1214	4800315	Neutral return spring	1
1215	4800086-0002	Control handle	1
1216	4800084	Neutral return bracket	1
1219	9005001-1200	Pipe plug	2
1235	9009660-3100	Lock washer	1
1401	4800155-0007	Orifice plug	1
1402	4510157	Control valve sleeve assembly	1
1701	4510073	Variable swashplate assembly	1
1702	4460696	Journal bearing	2
1801	4460455-0004	Servo cover	1
1802	4460455-0002	Servo cover	1
1805	4461034	Spring guide	1
1806	4460303-0001	Servo stop	1
1807	4460164	Servo spring	1
1808	4461033	Screw	1
1809	4460302	Spring guide	1
1810	9006220-0131	Retaining ring	1
1811	9003535-3700	Lock nut	1
1819	5000480	Nut	1
1820	9007276-0134	Screw	10
1901	4460547-0002	Bypass valve (.031" orifice)	1
2101	9510445	Shim kit	1
2102	9005475-0058	Plug	1
2104	4800431	Charge relief valve spring	1
2105	9800965	Valve	1
2107	9005110-9000	Plug	3
2110	9005100-5600	Plug	2
2111	9005100-5600	Plug	4
2115	9003575-0083	Nut	2
2118	9001465-0010	Needle bearing	2
2129	9004875-0100	Spring pin	2
2130	5000208	Screw	2
2131	9001315-0011	Ball bearing	1
2132	9006200-0281	Retaining ring	3

# Sauer-Sundstrand Service Parts List

Date: 19 April 99

## M91-46507

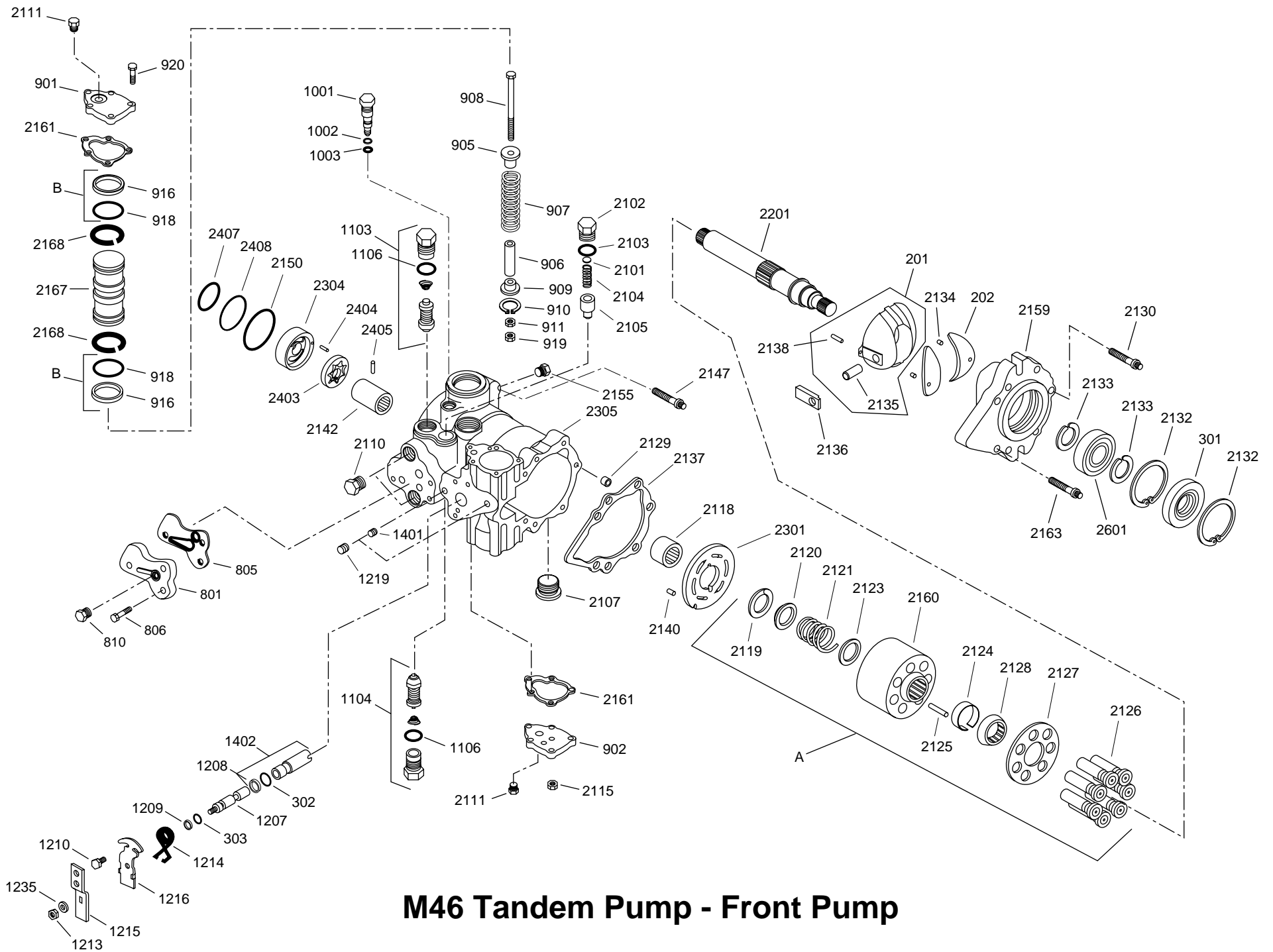
<u>Item</u>	<u>Part Number</u>	<u>Description</u>	<u>Usage</u>
2133	9006300-0137	Ring	3
2134	5000116	Spring pin	4
2135	9004820-4416	Pin	2
2136	4460162	Bearing sleeve	2
2138	5000507	Pin	2
2140	9004700-1907	Pin	2
2142	4460258	Coupling	1
2144	9003530-5000	Nut	1
2145	9008800-5048	Stud	1
2147	9007500-5028	Screw	2
2148	9005100-5600	Plug	2
2155	9005100-4400	Plug	2
2159	4460563	Front cover	1
2163	5000207	Screw	12
2167	4460474	Servo piston	2
2201	4460354	Pump shaft, 19 tooth	1
2301	4460683	Valve plate -RH	1
2303	4460684	Valve plate - LH	1
2304	4800159-0002	Gerotor cover	1
2305	4460568	Front housing	1
2306	4460569	Rear housing	1
2403	4800077-0002	Gerotor assembly	1
2404	9004800-1913	Pin	1
2405	9004875-0081	Pin	1
2407	9004101-2240	O-ring	1
2408	9004101-2380	O-ring	1
2501	4460155	Pump shaft	1
2502	4460586	Cover plate	1
2503	4800482	A pad seal	1
2504	9007200-3716	Screw	2
2506	4460571	'A' flange	1
2601	9001315-0011	Ball bearing	1
2703	4510004-0300	Relief valve kit - 300 bar	1
2704	4510004-0300	Relief valve kit - 300 bar	1
2801	4800155-0007	Orifice plug	1
2802	4510157	Control sleeve assembly	1
2907	4460468	Valve spool	1
2910	9007276-0123	Screw	1
2913	9003575-0102	Nut	1
2914	4800315	Neutral return spring	1
2915	4800086-0002	Control handle	1
2916	4800084	Neutral return bracket	1
2919	9005001-1200	Pipe plug	2
2935	9009660-3100	Lock washer	1
A	4460890	Cylinder block kit	2
2119	9006250-0162	Retaining ring	2
2120	9009625-0105	Washer	2
2121	4460111	Cylinder block spring	2
2123	9009625-0108	Washer	2
2124	4460028	Retainer	2
2125	9004875-0113	Slipper hold-down pin	6
2126	4461032	Piston assembly	14
2127	4460009	Slipper guide	2
2128	4460180	Retainer guide	2
2160	4460832	Cylinder block	2

# Sauer-Sundstrand Service Parts List

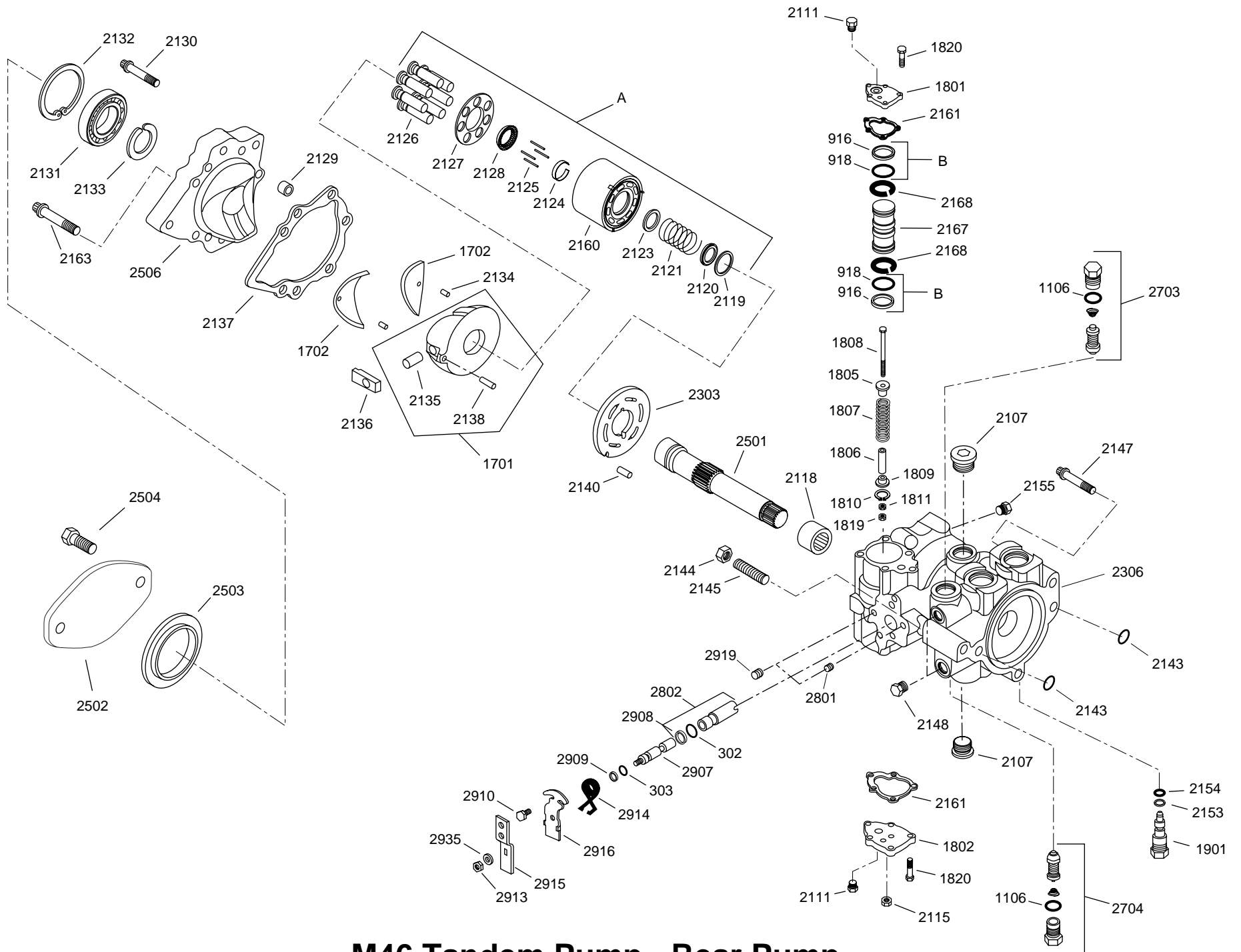
Date: 19 April 99

## M91-46507

<u>Item</u>	<u>Part Number</u>	<u>Description</u>	<u>Usage</u>
B	4510002	Piston ring and O-ring kit	2
916	8700067	Piston ring	4
918	9004100-1310	O-ring	4
Kit	4510018	Overhaul seal/gasket kit	1
301	9008000-0121	Lip seal	1
302	9004100-0160	O-ring	2
303	9004100-0120	O-ring	2
805	4460655	Filter adapter seal	1
916	8700067	Piston ring	4
918	9004100-1310	O-ring	4
1002	9006110-0120	Back up ring	1
1003	9004100-0120	O-ring	1
1106	9004201-7500	O-ring	4
1208	9006110-0160	Back up ring	1
1209	9006110-0120	Back up ring	1
2103	9004201-6200	O-ring	1
2137	4460564	Front cover gasket	2
2143	9004101-1160	O-ring	2
2150	9004375-0022	O-ring	1
2153	9006110-0120	Back up ring	1
2154	9004100-0120	O-ring	1
2161	4460413	Servo cover gasket	4
2168	4460648	Bearing	4
2908	9006110-0160	Back up ring	1
2909	9006110-0120	Back up ring	1



**M46 Tandem Pump - Front Pump**



**M46 Tandem Pump - Rear Pump**