



OSPL 1200  
Load sensing  
steering unit

Tech Note



**CONTENS**

Contens.....	2
Introduction.....	3
Use and function.....	3
Technical data.....	4
Code numbers and weights.....	4
Dimensions.....	5

© 2004 Sauer-Danfoss. All rights reserved. Printed in Europe  
Sauer-Danfoss accepts no responsibility for possible errors in catalogs, brochures and other printed material. Sauer-Danfoss reserves the right to alter its products without prior notice. This also applies to products already ordered provided that such alterations aren't in conflict with agreed specifications. All trademarks in this material are properties of their respective owners. Sauer-Danfoss and the Sauer-Danfoss logotype are trademarks of the Sauer-Danfoss Group.

Front cover illustrations: F301082,  
Drawing: 150-577

#### INTRODUCTION

In order to fulfill marked requirements regarding high steering capacity in compact design Sauer-Danfoss introduce a new size of steering unit: OSPL 1200 LS Load Sensing steering unit with extended displacement: 1200 cm<sup>3</sup> [73.22 in<sup>3</sup>]

The pressure limit also has been extended to 240 bar [3481 psi] as maximum steering pressure (P-T).

#### Use and function

OSPL 1200 LS is a load sensing steering unit specially developed for large displacement in order to minimise flow loss. It is therefore extremely suitable for large vehicles.

#### Version

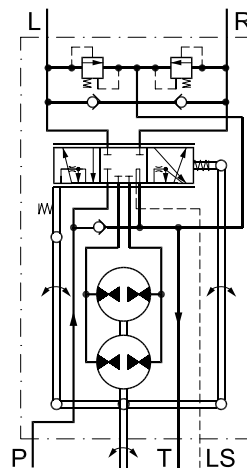
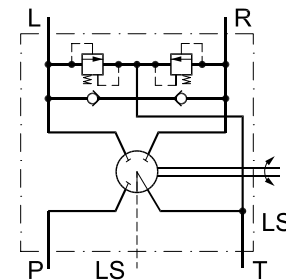
OSPL 1200 LS: Steering unit load sensing for high steering flow.

OSPL 1200 LS is available in the following version: LS Dynamic (non reaction)



#### OSPL LS

*Load sensing dynamic non-reaction*



150-613.10

**TECHNICAL DATA**

COMMON DATA: Look in sub catalogue: *“General, steering components “*

*Displacement, flow and pressure: OSPL 1200 LS*

Steering unit	Displacement cm <sup>3</sup> [in <sup>3</sup> ]	Rated oil flow l/min [USgal/min]	Max. pressure on connections					
			P		T		L, R	
			bar	[psi]	bar	[psi]	bar	[psi]
OSPL 1200 LS dynamic	1200 [73.22]	100 [26.42]	240	[3481]	40	[580]	320	[4641]

**ORDERING**

**OSPL 1200 Load sensing dynamic non-reaction steering unit**

OSPL 1200 LS Dynamic steering units in the table below has incorporated the following valve functions:

- Shock valves
- Suction valves

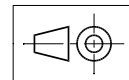
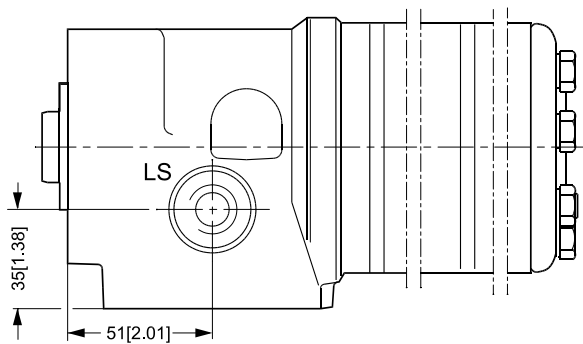
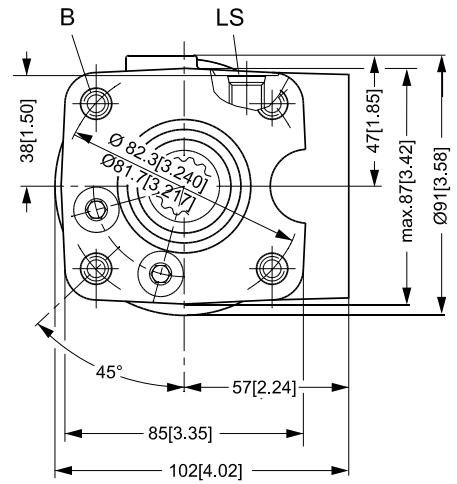
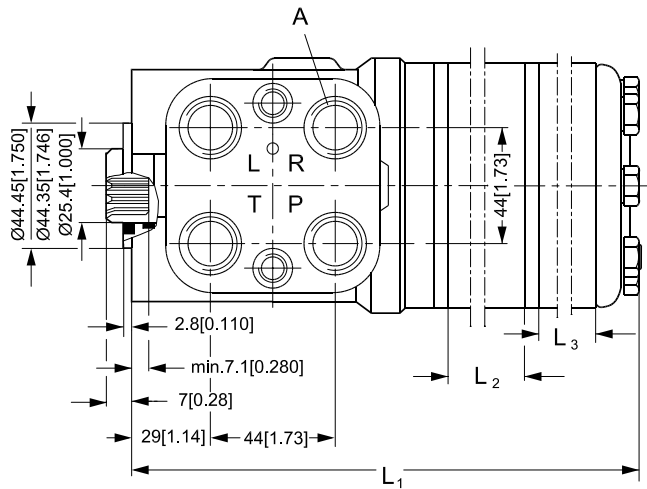
*OSPL LS in the table below has soft neutral setting springs*

Steering unit	Code Numbers	Weight	
	Connections US version for OLS 3/4 -16UNF - O* 7/16 -20UNF - O*+S**		
		kg	[lb]
OSPL 1200	Please contact the Sauer-Danfoss organization	11	[24.25]

O\*: O - ring chamfer on port connections

S\*\*: spot face around port connection

**DIMENSIONS**



150-612.10

A:  $\frac{3}{4}$ - 16 UNF O-ring boss,  
15 mm [0.59 in] deep

B: M10 x 1.5, 16 mm [0.63 in] deep

LS:  $\frac{7}{16}$ - 20 UNF O-ring boss  
11.5 mm [0.45 in] deep

Steering unit	L1	L2	L3
OSPL 1200 LS	288 mm [11.34 in]	104 mm [4.09 in]	52 mm [2.05 in]



Load sensing steering unit type OSPL 1200  
Tech Note  
Notes



Load sensing steering unit type OSPL 1200  
Tech Note  
Notes



## OUR PRODUCTS

Hydrostatic transmissions  
Hydraulic power steering  
Electric power steering  
Closed and open circuit axial piston pumps and motors  
Gear pumps and motors  
Bent axis motors  
Radial piston motors  
Orbital motors  
Transit mixer drives  
Planetary compact gears  
Proportional valves  
Directional spool valves  
Cartridge valves  
Hydraulic integrated circuits  
Hydrostatic transaxles  
Integrated systems  
Fan drive systems  
Electrohydraulics  
Micro controllers and software  
Electric motors and inverters  
Digital electronics and software  
Joystick and control handles  
Displays  
Sensors

## Sauer-Danfoss Mobile Power and Control Systems – Market Leaders Worldwide

Sauer-Danfoss is a comprehensive supplier providing complete systems to the global mobile market.

Sauer-Danfoss serves markets such as agriculture, construction, road building, material handling, municipal, forestry, turf care, and many others.

We offer our customers optimum solutions for their needs and develop new products and systems in close cooperation and partnership with them.

Sauer-Danfoss specializes in integrating a full range of system components to provide vehicle designers with the most advanced total system design.

Sauer-Danfoss provides comprehensive worldwide service for its products through an extensive network of Authorized Service Centers strategically located in all parts of the world.

Sauer-Danfoss (US) Company  
2800 East 13th Street  
Ames, IA 50010, USA  
Phone: +1 515 239-6000, Fax: +1 515 239 6618

Sauer-Danfoss (Neumünster) GmbH & Co. OHG  
Postfach 2460, D-24531 Neumünster  
Krokamp 35, D-24539 Neumünster, Germany  
Phone: +49 4321 871-0, Fax: +49 4321 871 122

Sauer-Danfoss (Nordborg) ApS  
DK-6430 Nordborg, Denmark  
Phone: +45 7488 4444, Fax: +45 7488 4400